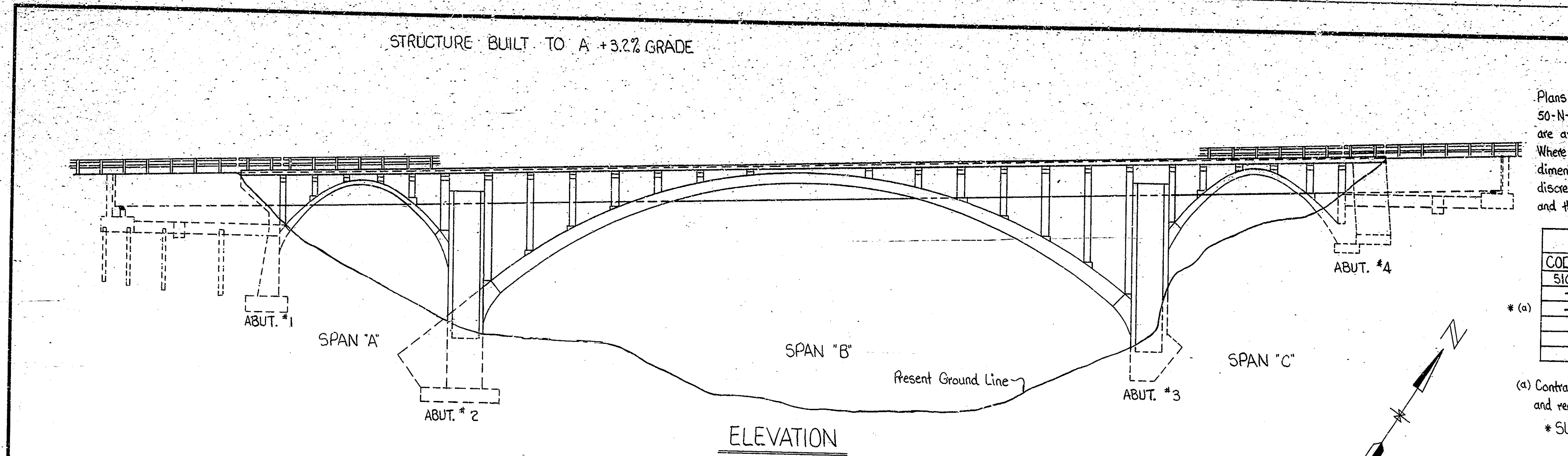
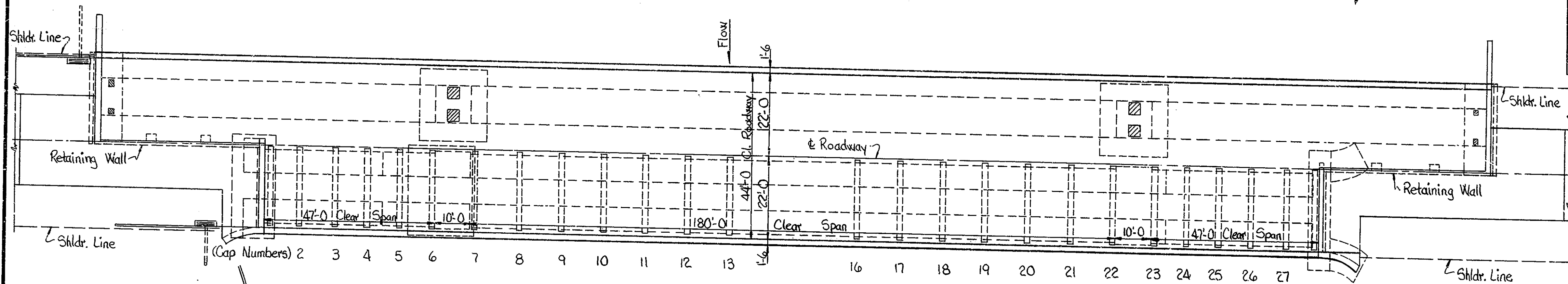


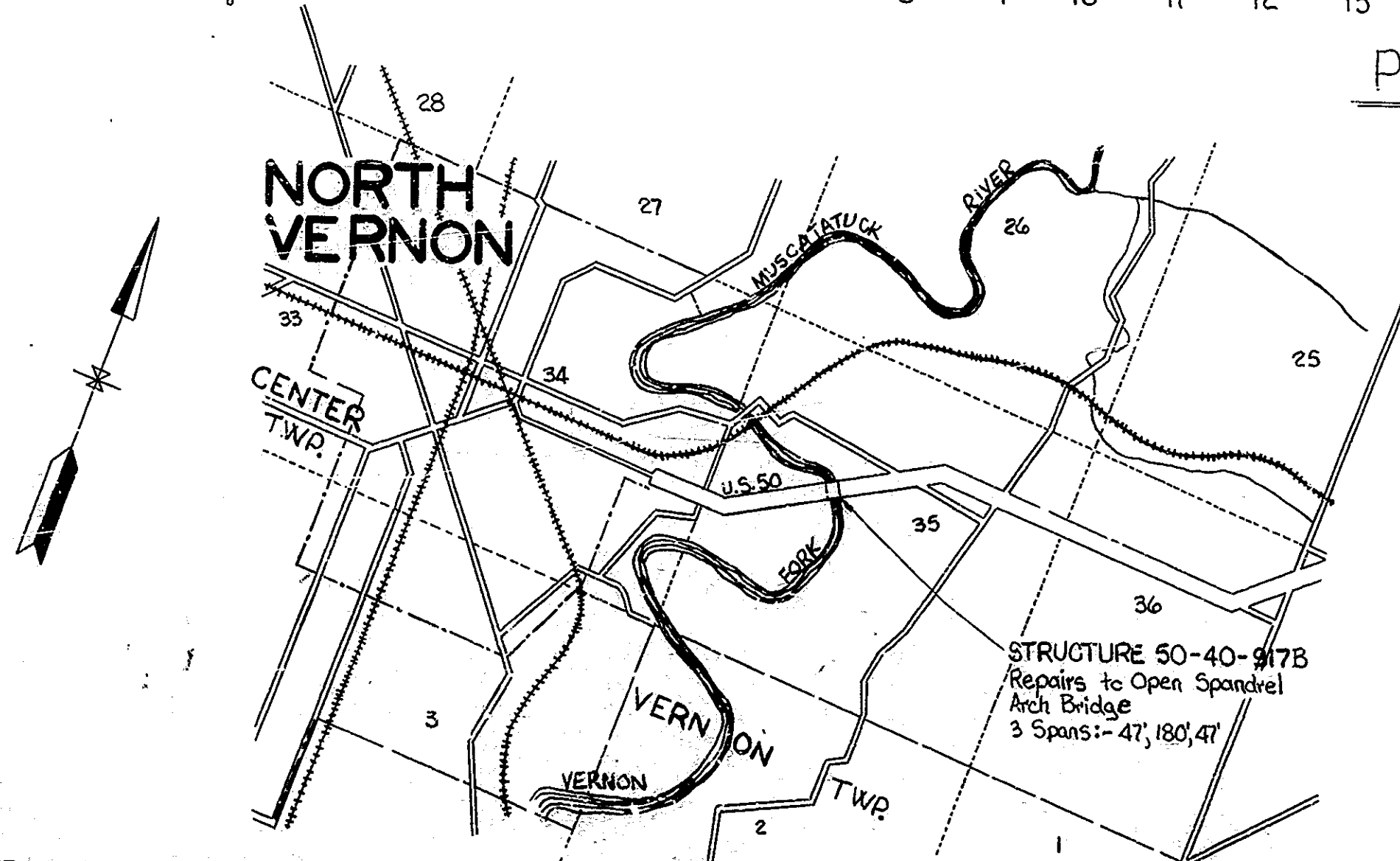
STRUCTURE BUILT TO A +3.2% GRADE



ELEVATION



PLAN



LOCATION PLAN

Scale: 1" = 2000'

INDIANA STATE HIGHWAY COMMISSION
STANDARD SPECIFICATIONS DATED
1978 TO BE USED WITH THESE PLANS.

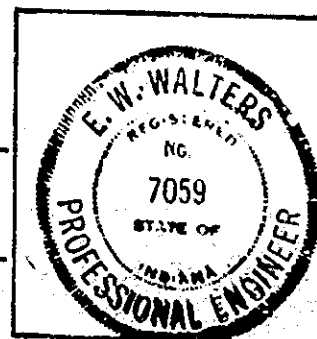
DESIGNED: CKD
DRAWN: WJGT, CKD, D.S.H.
TRACED: CKD

APPROVED 6-11-79

CHIEF HIGHWAY ENGINEER
INDIANA STATE HIGHWAY COMMISSION

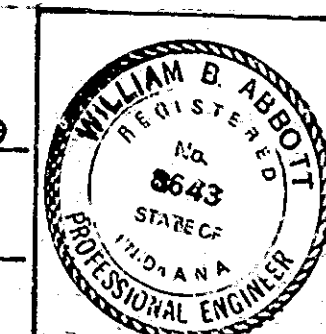
RECOMMENDED FOR APPROVAL 6-11-79

E. W. Walters
ENGINEER OF BRIDGE DESIGN
INDIANA STATE HIGHWAY COMMISSION



RECOMMENDED FOR APPROVAL 6-7-79

William B. Abbott
ASSISTANT ENGINEER OF BRIDGE DESIGN
INDIANA STATE HIGHWAY COMMISSION



GENERAL NOTES

Plans for this structure are on file in the Central Office as Bridge File: 50-N-917 (Original Structure) and 50-40-917A (Structure Widening) and are available on request.
Where new work is to be fitted to old work, the Contractor shall check all dimensions and conditions in the field and report any errors or discrepancies to the Engineer or assume responsibility for their correctness and the fit of the new part to the old.

ESTIMATE OF QUANTITIES			
CODE NO.	DESCRIPTION	UNIT	QUANTITY
51038	Structural Steel	LSUM	1
-	1" Expansion Anchors	EACH	464
-	Jacking Superstructure Deck and Repositioning Bearing Pads	LSUM	1

(a) Contractor shall jack superstructure deck only enough to relieve load and reposition bearing pad until it bearing pad falls directly over it cap.

* SUPERSTRUCTURE DEAD LOAD REACTIONS AT BEARING PADS

	Pad #1	Pad #2	Pad #3	Pad #4
Distance from ϵ Roadway	1'-3"	7'-9"	14'-3"	20'-9"
D.L. Reaction (Kips)				
Span "A" or "C"	5.3	10.3	7.8	11.0
Span "B"	6.7	13.0	9.8	14.0

Contractor shall submit proposed Jacking Scheme to the Engineer for approval.

CONSTRUCTION PROCEDURE

- At caps 2 thru 9 and 20 thru 27, inspect bearing pads (4 on each cap) to determine if they have moved from their original position on the ϵ of cap.
- At caps 2 thru 9 and 20 thru 27, return all displaced bearing pads to their correct locations.
- Using 1" expansion anchors, fasten steel angles to both faces of the cap at each bearing pad on caps 2 thru 9 and 20 thru 27 as shown on Drawg. R2.

TITLE SHEET AND GENERAL PLAN

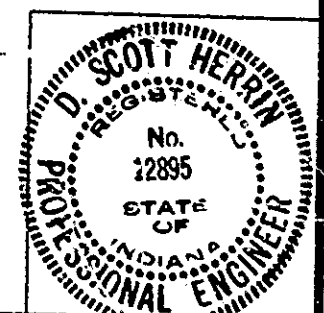
REPAIRS TO OPEN SPANDREL ARCH BRIDGE
3 SPANS: 47'-0", 180'-0", 47'-0" SQUARE 44'-0" RDWY.
OVER VERNON FORK MUSCATATUCK RIVER ON U.S. ROAD 50

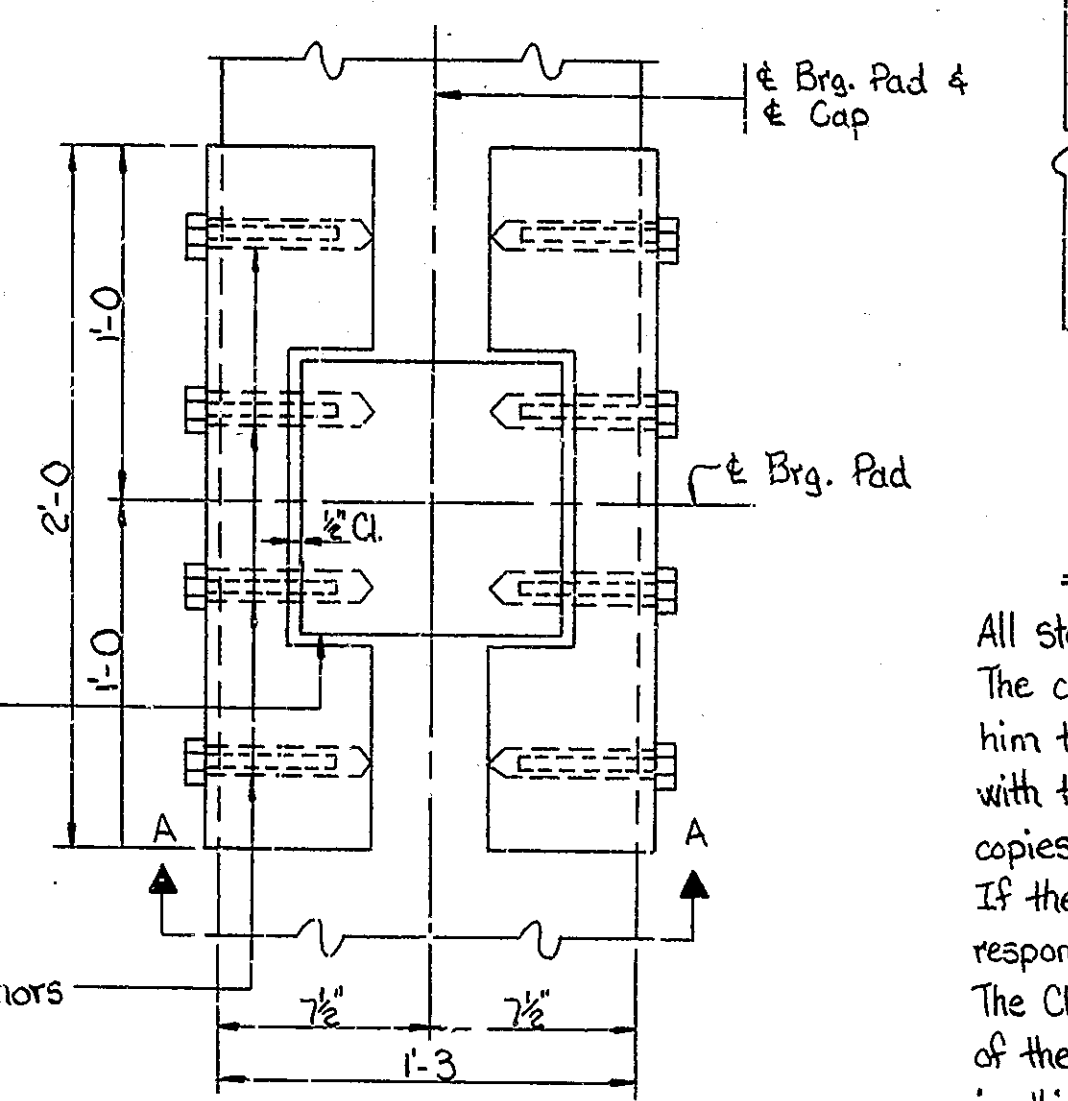
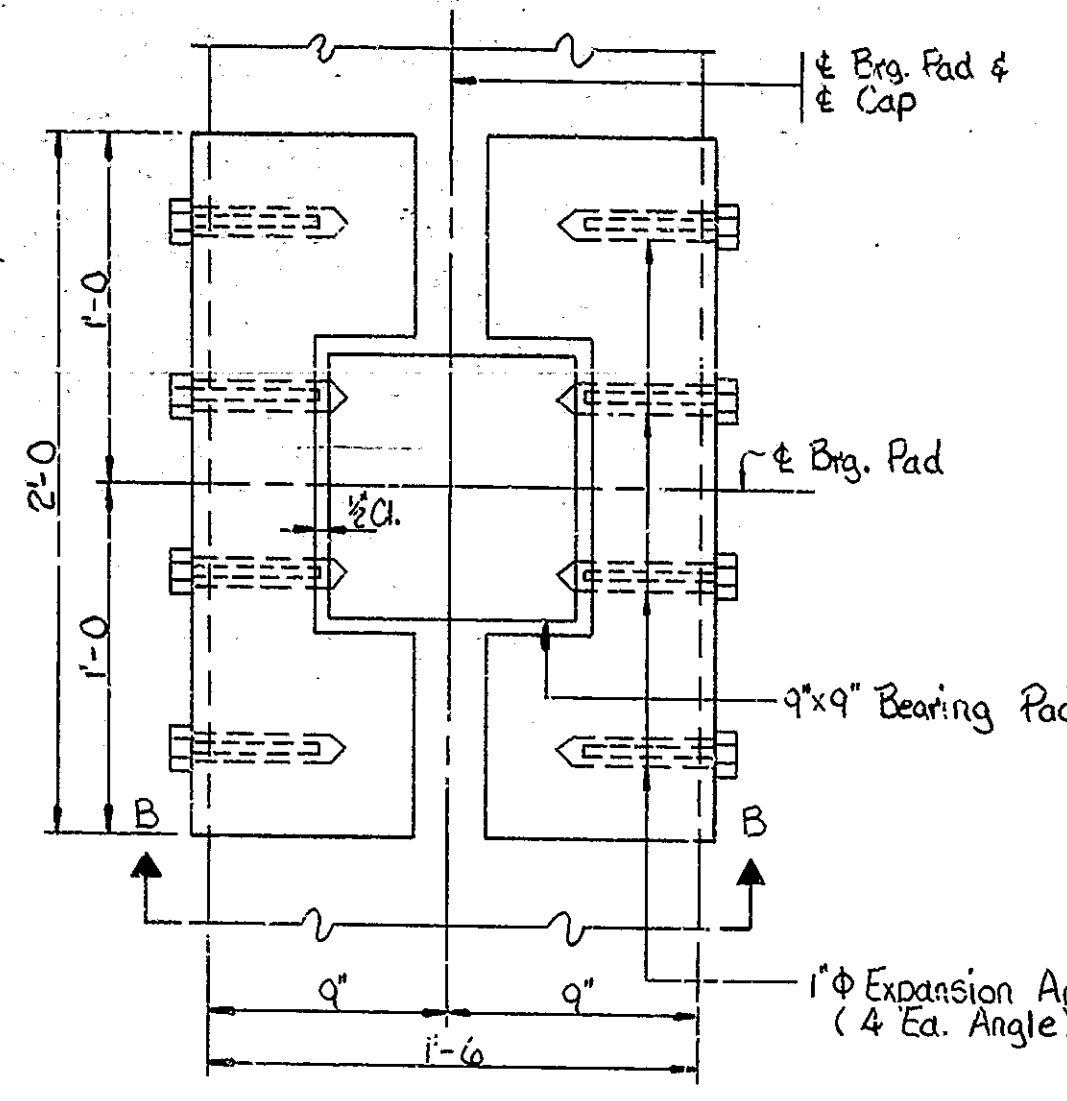
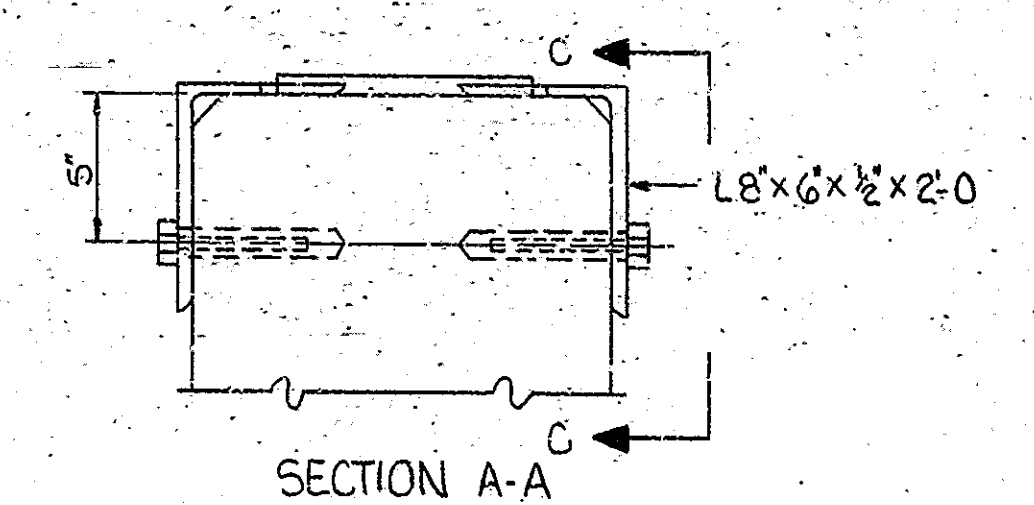
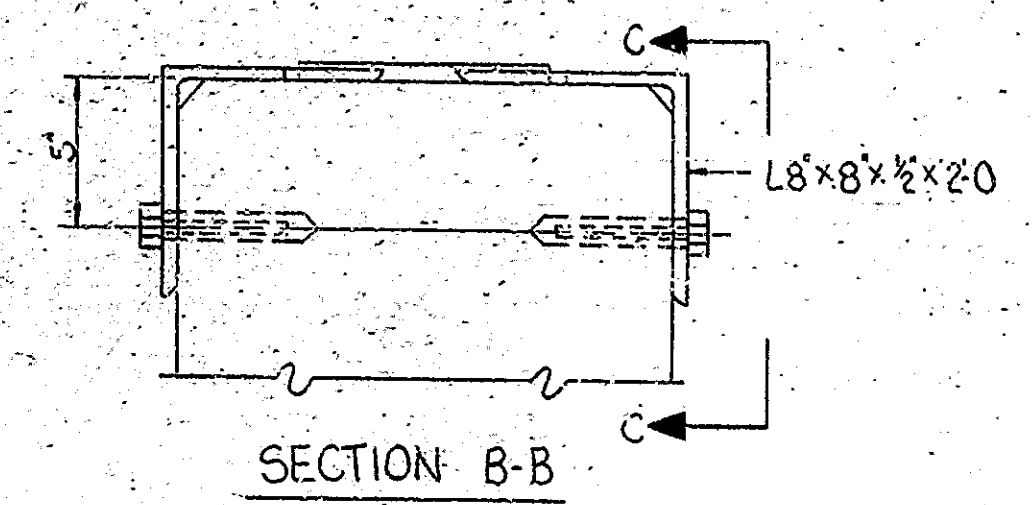
INDIANA STATE HIGHWAY COMMISSION

JENNINGS COUNTY
SCALE: 1/8" = 1'-0" (Unless Noted) DATE: JUNE 5, 1979

D. Scott Herin
SENIOR DESIGNER

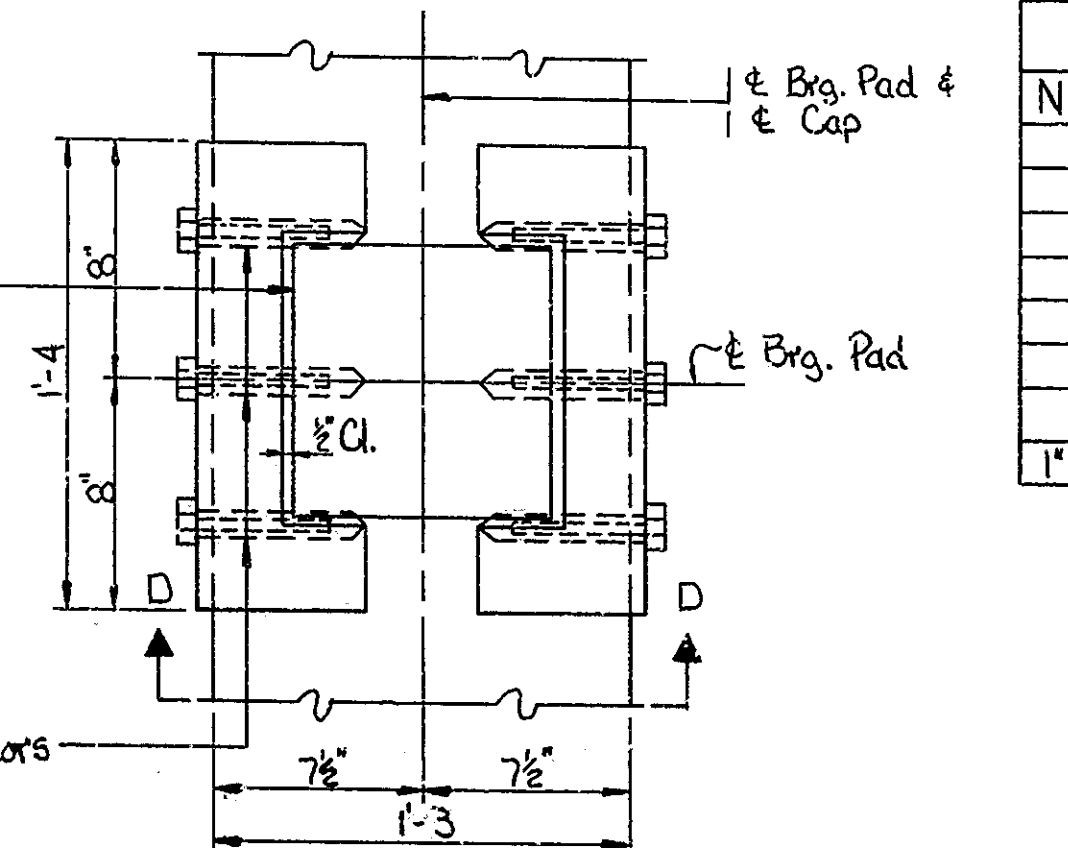
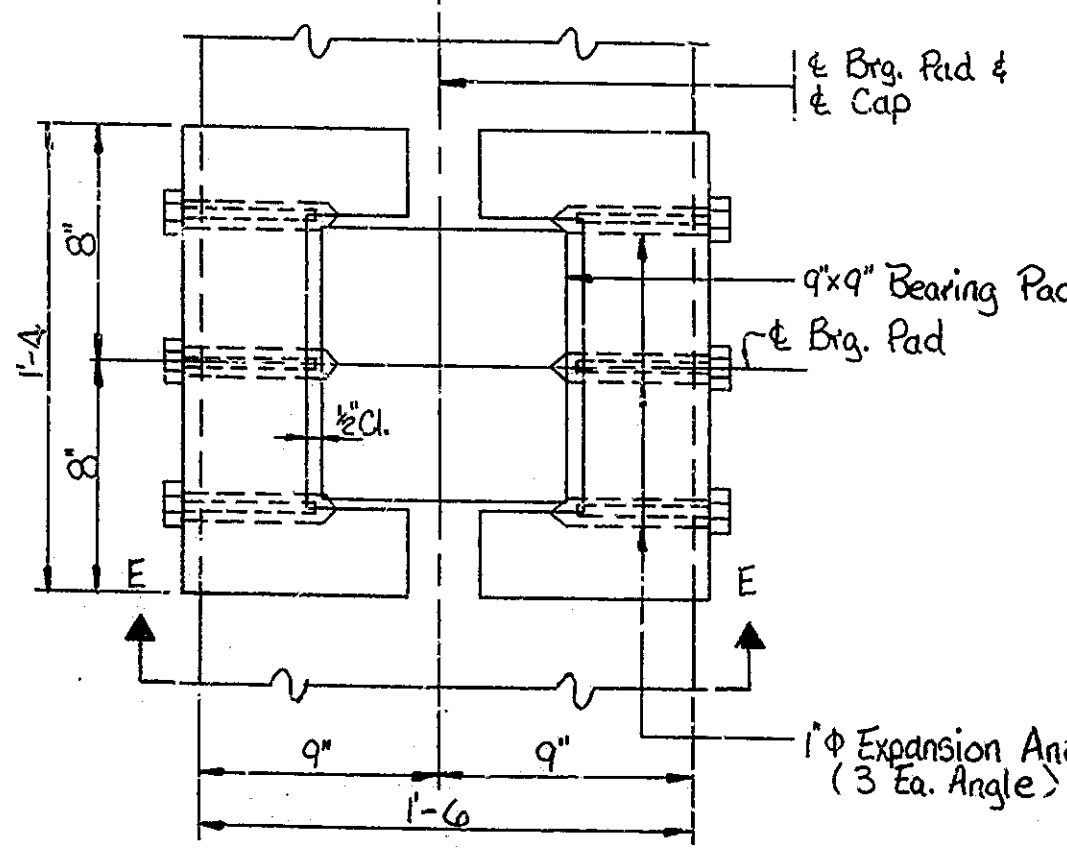
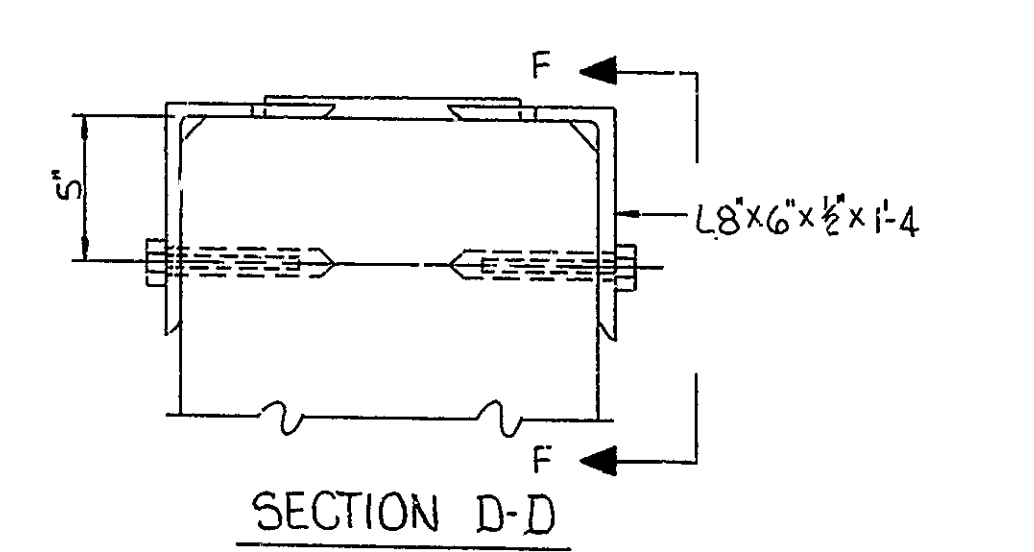
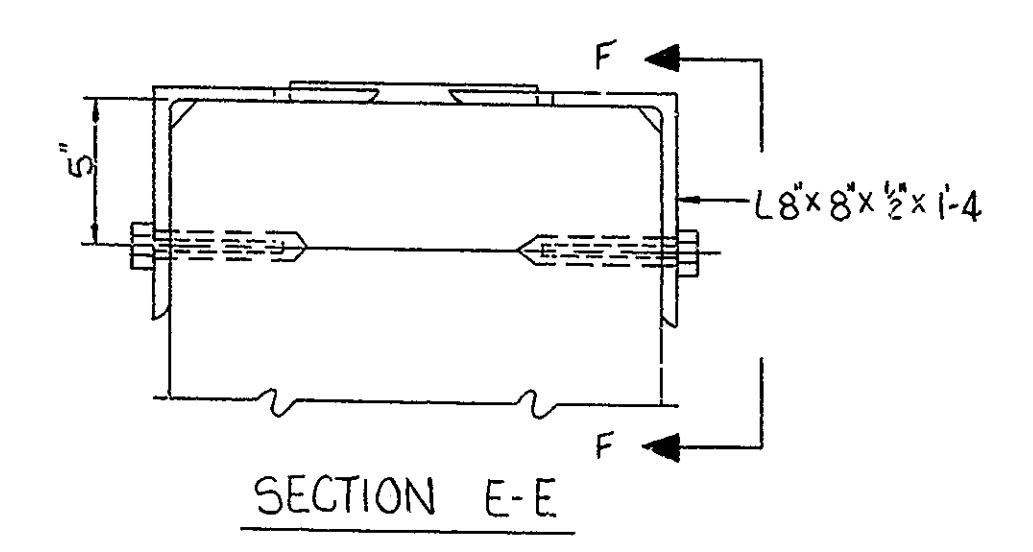
DRAWING: R1 OF 2 SHEET: 1 OF 2
PROJECT: ST-042-9(B)
CONTRACT NO. B-12237
BRIDGE FILE: 50-40-917B





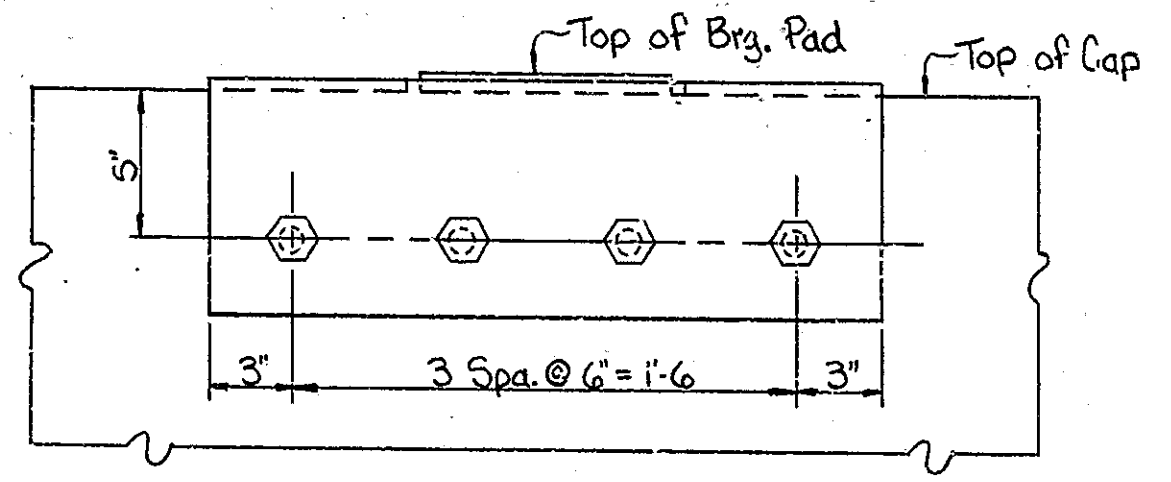
PARTIAL CAP PLAN
Caps 3, 4, 6, 23, 25 & 26

PARTIAL CAP PLAN
Caps 2, 5, 24 & 27



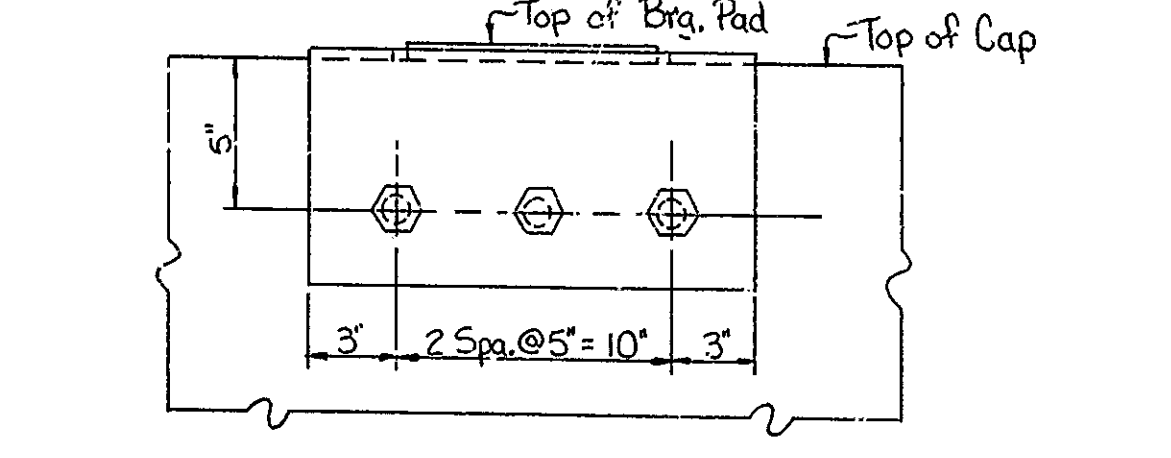
PARTIAL CAP PLAN
Caps 7 & 22

PARTIAL CAP PLAN
Caps 8, 9, 20 & 21



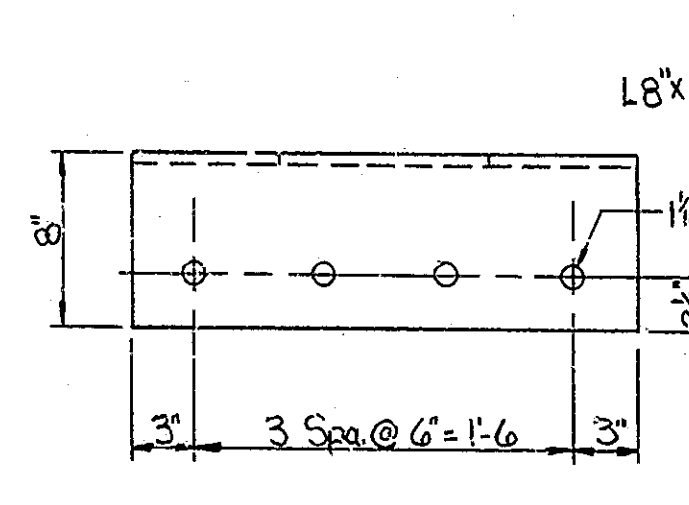
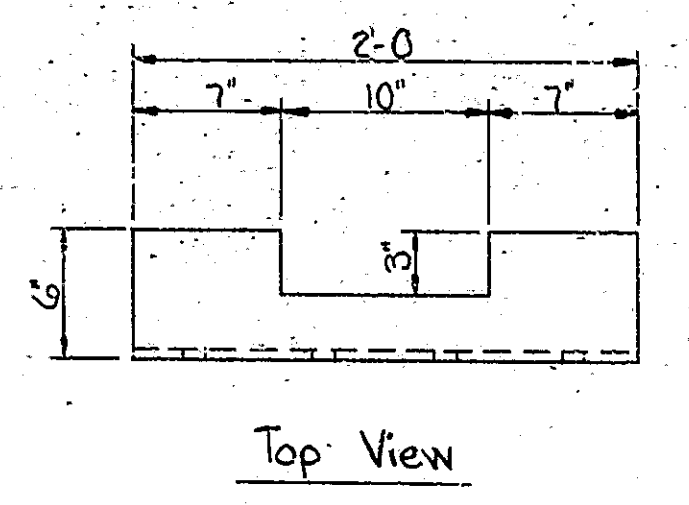
ELEVATION C-C
FABRICATION & ERECTION NOTES

All steel shall conform to ASTM A588 (Unpainted).
The contractor shall prepare detailed working or shop drawings to enable him to fabricate, erect, and construct all parts of the work in conformity with the Engineer's drawings and specifications and shall submit four (4) copies to the Engineer. See Art. 711.04 of the specifications.
If the contractor uses these drawings as shop plans, he shall assume full responsibility for the accuracy of the details.
The Charpy V-Notch Toughness test requirements specified in Art. 909.02(c) of the specifications will not be required for any structural steel used in this structure.
1" Expansion Anchors shall have a minimum pullout strength of 20,000 lbs.
Estimated weight of structural steel: 5550 lbs.

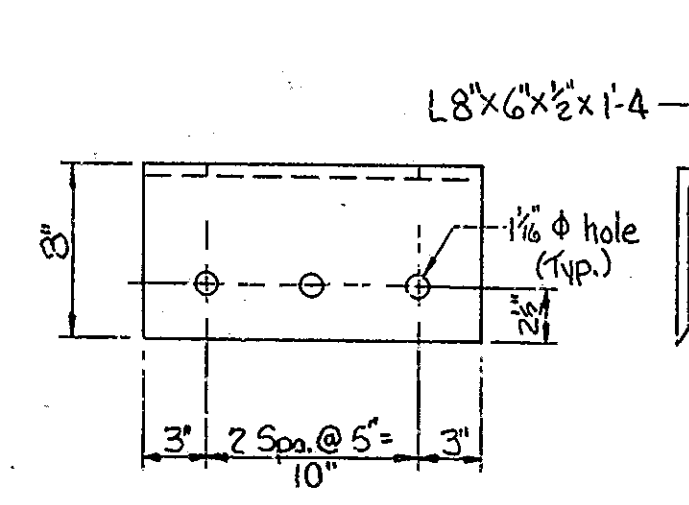
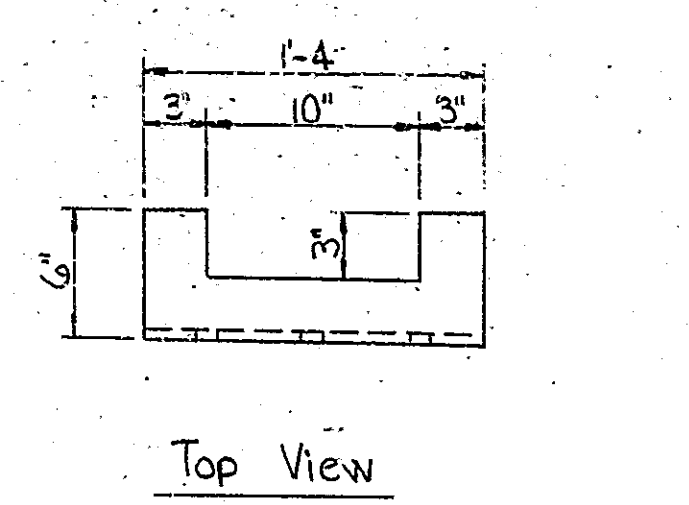


ELEVATION F-F

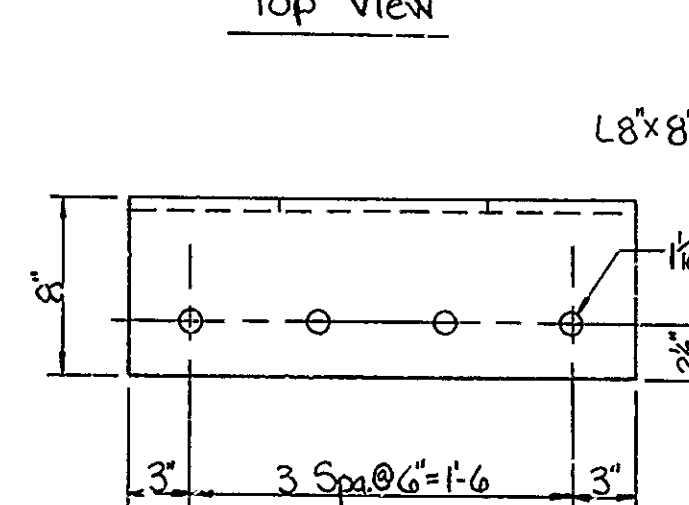
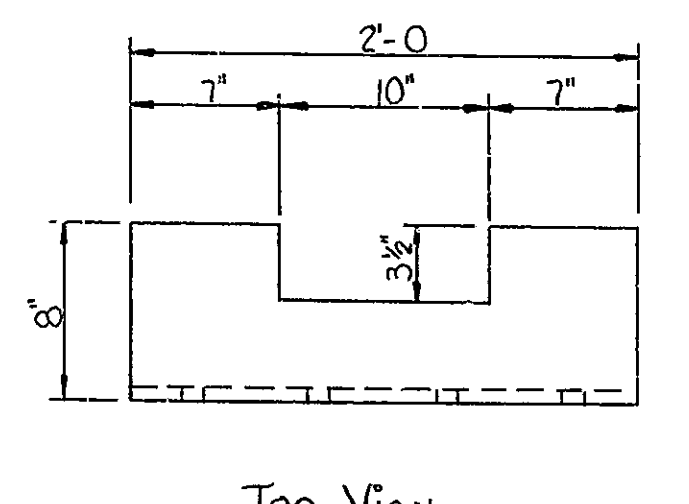
BILL OF MATERIALS					
No.	QTY	SECTION	LENGTH	LOCATION	WEIGHT
		L8x6x1/2	2'-0	Caps 2, 5, 24, 27	1472
	32	L8x6x1/2	1'-4	Caps 8, 9, 20, 21	981
	16	L8x8x1/2	1'-4	Caps 7, 22	563
	48	L8x8x1/2	2'-0	Caps 3, 4, 6, 23, 25, 26	2534
Total Structural Steel					5550*
MISCELLANEOUS					
1" Expansion Anchors					464 Ea.



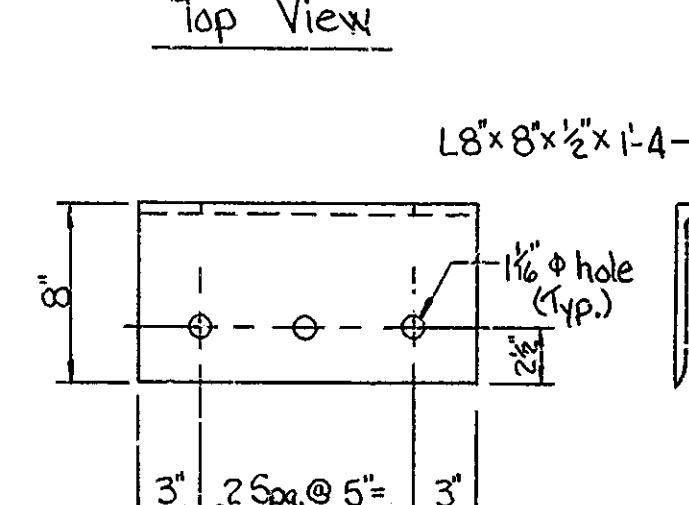
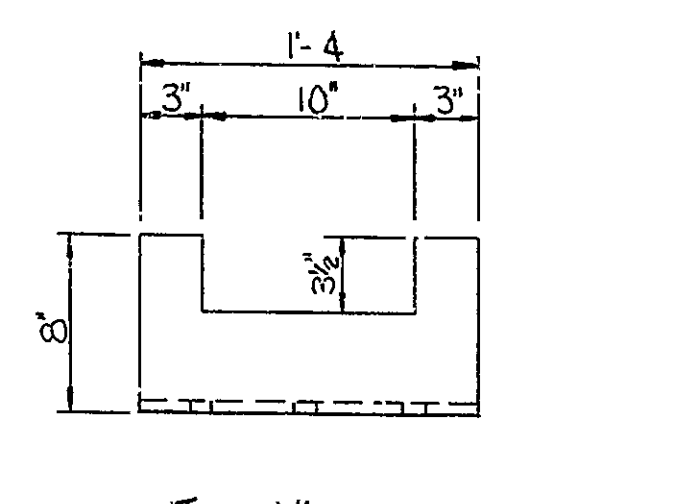
Top View
Front View
End View
ANGLE DETAILS FOR CAPS 2, 5, 24 & 27
Scale: 1 1/2" = 1'-0



Top View
Front View
End View
ANGLE DETAILS FOR CAPS 8, 9, 20 & 21
Scale: 1 1/2" = 1'-0



Top View
Front View
End View
ANGLE DETAILS FOR CAPS 3, 4, 6, 23, 25 & 26
Scale: 1 1/2" = 1'-0



Top View
Front View
End View
ANGLE DETAILS FOR CAPS 7 & 22
Scale: 1 1/2" = 1'-0

DETAILS AND BILL OF MATERIALS
INDIANA STATE HIGHWAY COMMISSION

SCALE: 2" = 1'-0 (Unless Noted) DATE: JUNE 5, 1979
D. Scott Harrison
SENIOR DESIGNER

DRAWING: R2 OF 2 SHEET: 2 OF 2
PROJECT: ST-042-9(B)
CONTRACT NO. 3-12237
BRIDGE FILE: 50-40-917B



DESIGNED: CKD
DRAWN: WGT, 4-79 CKD, MRS, 4-79
TRACED: CKD

NO STR